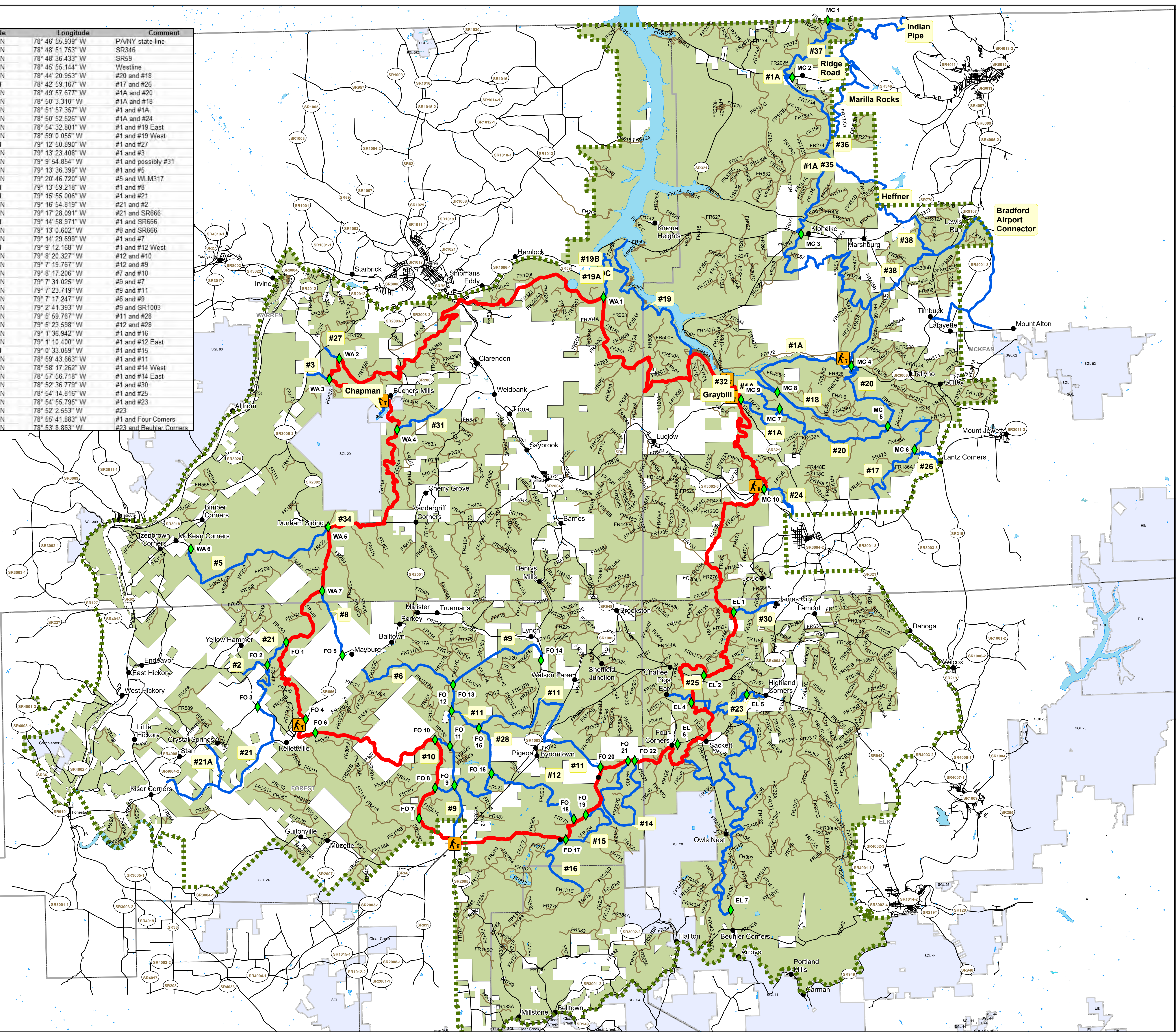


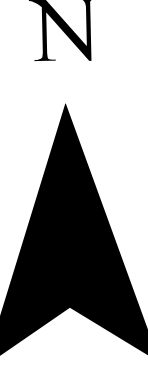
Intersection	Latitude	Longitude	Comment
MC 1	41° 59' 53.126" N	78° 46' 55.939" W	PANY state line
MC 2	41° 57' 41.692" N	78° 48' 51.753" W	SR346
MC 3	41° 51' 34.561" N	78° 48' 36.433" W	SR59
MC 4	41° 46' 19.508" N	78° 45' 55.144" W	Westline
MC 5	41° 43' 59.760" N	78° 44' 20.953" W	#20 and #18
MC 6	41° 43' 3.723" N	78° 42' 59.167" W	#17 and #26
MC 7	41° 44' 47.001" N	78° 49' 57.677" W	#1A and #20
MC 8	41° 45' 26.053" N	78° 50' 3.310" W	#1A and #18
MC 9	41° 45' 10.819" N	78° 51' 57.357" W	#1 and #24
MC 10	41° 41' 40.062" N	78° 50' 52.526" W	#1A and #24
MC 11	41° 46' 53.656" N	78° 54' 32.801" W	#1 and #19 East
WA 1	41° 49' 18.452" N	78° 59' 0.055" W	#1 and #19 West
WA 2	41° 47' 8.278" N	79° 12' 50.890" W	#1 and #27
WA 3	41° 46' 20.176" N	79° 13' 23.408" W	#1 and #3
WA 4	41° 44' 18.884" N	79° 9' 54.854" W	#1 and possibly #31
WA 5	41° 40' 35.131" N	79° 13' 36.399" W	#1 and #5
WA 6	41° 39' 50.024" N	79° 20' 46.720" W	#5 and WLM317
WA 7	41° 38' 5.573" N	79° 13' 59.218" W	#1 and #8
FO 1	41° 36' 7.247" N	79° 15' 55.006" W	#1 and #21
FO 2	41° 35' 14.775" N	79° 16' 54.819" W	#21 and #2
FO 3	41° 33' 36.853" N	79° 17' 28.091" W	#21 and SR666
FO 4	41° 33' 5.898" N	79° 14' 58.971" W	#1 and SR666
FO 5	41° 35' 33.608" N	79° 13' 0.602" W	#8 and SR666
FO 6	41° 32' 33.692" N	79° 14' 29.699" W	#1 and #7
FO 7	41° 29' 8.209" N	79° 9' 12.168" W	#1 and #12 West
FO 8	41° 30' 19.114" N	79° 8' 20.327" W	#12 and #10
FO 9	41° 30' 23.647" N	79° 7' 19.767" W	#12 and #9
FO 10	41° 32' 11.516" N	79° 8' 17.206" W	#7 and #10
FO 11	41° 31' 56.206" N	79° 7' 31.025" W	#9 and #7
FO 12	41° 33' 18.037" N	79° 7' 23.719" W	#9 and #11
FO 13	41° 34' 19.272" N	79° 7' 17.247" W	#6 and #9
FO 14	41° 35' 12.299" N	79° 2' 41.393" W	#9 and SR1003
FO 15	41° 32' 36.401" N	79° 5' 59.767" W	#11 and #28
FO 16	41° 30' 49.264" N	79° 5' 23.598" W	#12 and #28
FO 17	41° 28' 11.082" N	79° 1' 36.942" W	#1 and #16
FO 18	41° 28' 58.987" N	79° 1' 10.400" W	#1 and #12 East
FO 19	41° 29' 7.628" N	79° 0' 33.059" W	#1 and #15
FO 20	41° 30' 59.077" N	78° 59' 43.663" W	#1 and #11
FO 21	41° 31' 11.712" N	78° 58' 17.262" W	#1 and #14 West
FO 22	41° 31' 11.963" N	78° 57' 56.718" W	#1 and #14 East
EL 1	41° 36' 54.098" N	78° 52' 36.779" W	#1 and #30
EL 2	41° 34' 27.512" N	78° 54' 14.816" W	#1 and #25
EL 4	41° 33' 24.490" N	78° 54' 55.795" W	#1 and #23
EL 5	41° 33' 40.497" N	78° 52' 2.553" W	#23
EL 6	41° 31' 48.360" N	78° 55' 41.883" W	#1 and Four Corners
EL 7	41° 25' 17.345" N	78° 53' 8.863" W	#23 and Beuhler Corners



ALLEGHENY NATIONAL FOREST SNOWMOBILE TRAILS

2024-2025 Season

NAD 1983 UTM 17N



Connector Trail	StateLands
Allegheny Snowmobile Trail	County
Kiosk	Town
Intersection - Navigational Point	Forest Service Ownership
Municipal Road	Non-FS Ownership
Forest Road	Allegheny National Forest Boundary

The USDA Forest Service makes no warranty, expressed or implied regarding the data displayed on this map, and reserves the right to correct, update, modify, or replace this information without notification.

